

ARGEAD

ARTURO GINES,S.C.

Marcial,1

50300 CALATAYUD (Zaragoza) (ESPAÑA)

Tfno: +34 976881304 (oficina) / +34 976 880093 (Taller)

Fax: +34 976885172

www.arturogines.com / e-mail: info@arturogines.com

INSTRUCTION MANUAL “MINOR” SHEARING PLANT



ARGEAD

The logo for ARGEAD, featuring the word "ARGEAD" in white, bold, uppercase letters on a red, rounded rectangular background.

EUROPEAN DIRECTIVES

The "MINOR" complies with the main requirements of the following Community Directives:

- Machine Directive 2006/42/CE
- Low Voltage Directive 2006/95/CE
- Electromagnetic Compatibility Directive 2004/108/CE



ADDRESS AND CONTACT INFO

ARTURO GINES,S.C.

Marcial,1

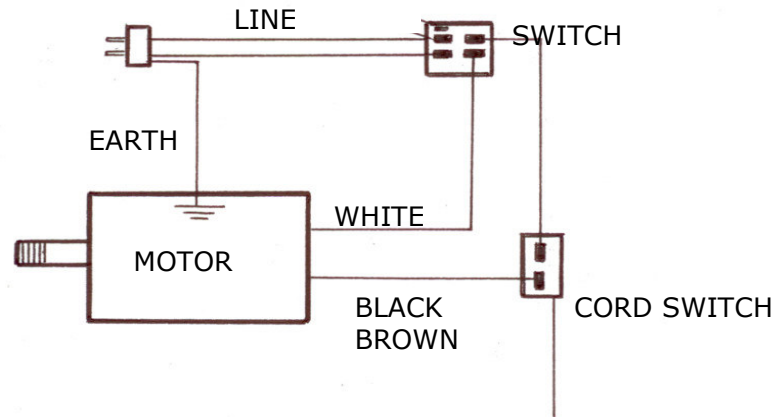
50300 CALATAYUD (Zaragoza) (ESPAÑA)

Tfno: +34 976881304 (oficina) / +34 976 880093 (Taller)

Fax: +34 976885172

www.arturogines.com / e-mail: info@arturogines.com

ELECTRICAL CONNECTIONS



TECHNICAL CHARACTERISTICS

TIPO: 71/50 CEI- 34 MOD. "MINOR"

RPM : 2.830

HP : 0,50

V : 230

Hz : 50

SERIE N°:

DATE OF MANUFACTURE:

CONTENTS

2-3 - SAFETY REGULATIONS

4 - START UP

5 - EXPLODED VIEW: "MINOR" MOTOR

6-7- EXPLODED FLEXIBLE DRIVE X-125-T

**8- ELECTRICAL CONNECTIONS
CHARACTERISTICS OF THE MOTOR**

**9- EUROPEAN DIRECTIVES
CONTACT INFORMATION**



WHEN THIS SYMBOL APPEARS IN THE INSTRUCTION BOOK, IT INDICATES A POTENTIALLY HAZARDOUS SITUATION. IT IS RECOMMENDABLE TO TAKE PRECAUTIONS.



SAFETY REGULATIONS

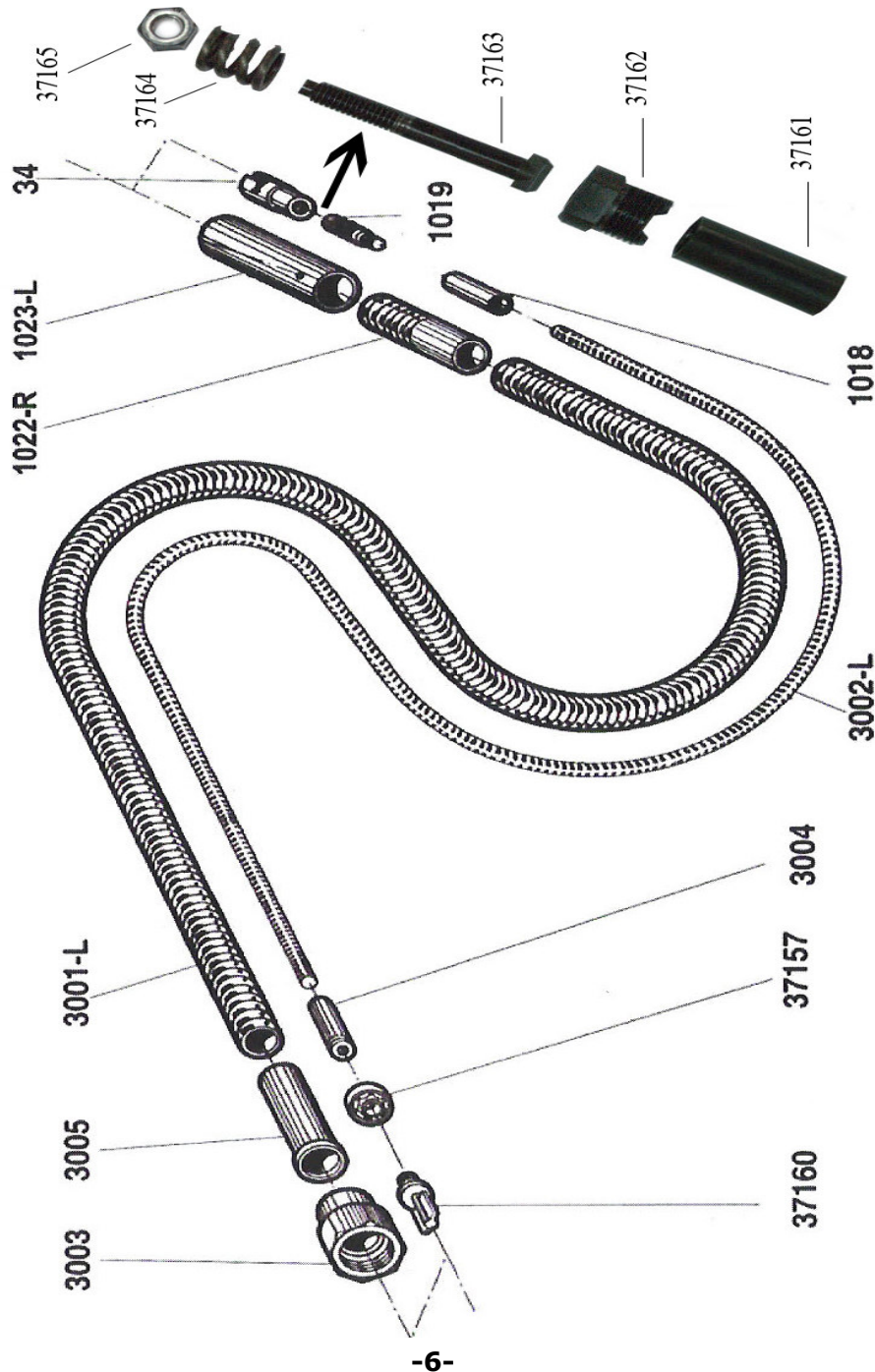
- Ensure the electric voltage of the motor is the same as the grid to which it will be connected. (READ THE CHARACTERISTICS ON THE MOTOR PLATE).
- Use sockets for the connection that have default current protection and are properly earthed.
- El motor lhas a doublé switch: starter and stop.
Start the motor by pushing the green switch and the pulling the cord on the other switch.
Stop by pulling on the cord again.
- If the current is stopped while the motor is running, it will automatically disconnect. This means that when the electricity comes back, the green switch needs to be pressed to use the cord switch.
- When Shearing is finished, switch off the electricity by pressing the red switch and disconnecting the motor from the grid.
- Do not use a wet motor and do not shear in very damp places.
- Check the state of the motor and its connector cable regularly. If any anomalies are found, consult the AUTHORISED TECHNICAL SERVICE.
- Place the connector cable at height to avoid damage from animals or snagging which may cause accidents.
- Keep the machine out of children´s reach and of people who are unfamiliar with handling the equipment.
- Shear in areas with no children or animals.
- Use suitable footwear and clothing, in addition to gloves and earmuffs as the noise emission is greater than 70db (A)
- Work with a suspended motor that is securely held in place to stop it falling otherwise serious accidents may occur.
- Do not shear in the rain or on storm days.



EXPLODED VIEW : X-125-T FLEXIBLE DRIVE

Nº	DENOMINACIÓN
34	Bayonet
1018	Flexible terminal sleeve M 6x100
1019	Threaded bolt M 6x100 / W 5/16
1022-R	Terminal sleeve coverM 22x150
1023-L	Threaded sleeve cover M 22x150
3001-L	Cover with terminals
3002-L	Flexible with terminals
3003	Motor coupling nut 10 H
3004	Flexible terminal sleeve M 9x125
3005	Terminal sleeve cover
37-157	Bearing 6001-ZZ
37-160	Crosshead bearing M 9x125
37-161	Male—socket clutch M 14x125
37-162	Female -socket clutch M 14x125
37-163	Axis—clutch stem W 5/16
37-164	Spring- clutch
37-165	Nut - clutchW 5/16

EXPLODED VIEW: X-125-T FLEXIBLE DRIVE



SAFETY REGULATIONS

- Do not shear in areas where the ambient temperature is not between 0° and 40°.
- Do not shear in areas near to explosive objects or gases.
- Do not block the fan outlet on the motor.
- When the machine needs to be cleaned or repaired, disconnect the motor from the grid.
- This machine is designed for Shearing sheep, goats and camelids; use of this machine on other animals is prohibited.
- When the machine is not in use, store it in a dry place to prevent oxidation of the components.
- The Shearing flexible drive is connected to a safety clutch to prevent snagging and protect against accidents.

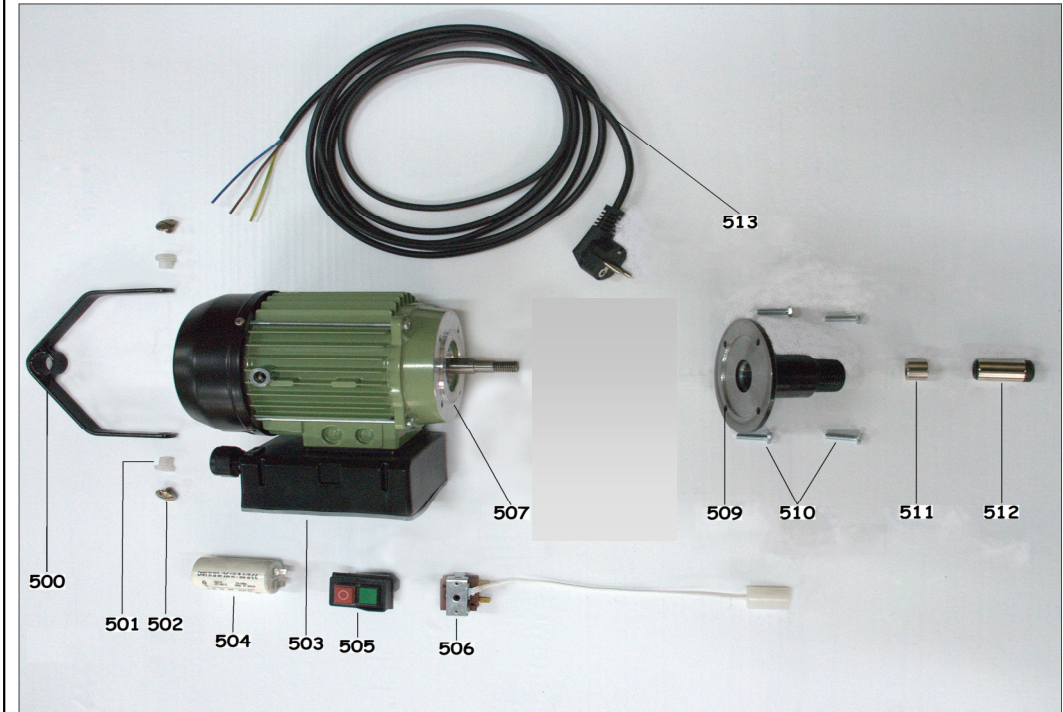


START UP

- Connect the motor to the grid (220v A/C). (READ THE SAFETY INSTRUCTIONS).
- Thread the flexible drive onto the motor without connecting the handpiece (left-hand thread).
- Start the motor by pushing the green switch and then pull on the cord.
- Connect the handpiece, pushing towards the inside of the flexible drive.
- Before starting to shear, carefully read the Instruction Manual for the handpiece.
- Stop the motor by pulling on the cord again.
- To remove the handpiece from the flexible drive : push towards the inside, turn half a circle anticlockwise and pull outwards.
- After completing the Shearing, disconnect the motor from the grid.

ARGEAD

EXPLODED VIEW: "MINOR" MOTOR



COMPONENTS "MINOR" MOTOR

N°	DENOMINATION	PARTS	N°	DENOMINATION	PARTS
500	Motor handle	1	507	Motor Minor 220v	1
501	Bushing	2	509	Support flexible drive	1
502	Screw W 1/4x9	2	510	Screw 6x15	4
503	Junction box	1	511	Shaft sleeve top	1
504	Capacitor 14mf	1	512	Rotating lip	1
505	Switch 220v	1	513	Connector cable	1
506	Switch cord	1			